



Be a Hero Through Music

2018 Midwest District Convention Bid

Kappa Kappa Psi - Eta Zeta

and

Tau Beta Sigma - Zeta Delta

University of Kansas

Table of Contents

| | |
|--|---------------|
| <u>Be a Hero Through Music Welcome</u> | <u>Pg. 3</u> |
| Letters of Support | |
| <u>Professor Sharon Toulouse – TBS Sponsor</u> | <u>Pg. 4</u> |
| <u>Dr. Mathew O. Smith – KKY Sponsor</u> | <u>Pg. 5</u> |
| <u>Dr. Paul W. Popiel – Director of Bands</u> | <u>Pg. 6</u> |
| Budgets | |
| <u>Proposed Covention Budget</u> | <u>Pg. 7</u> |
| <u>Tau Beta Sigma – Zeta Delta Budget</u> | <u>Pg. 8</u> |
| <u>Kappa Kappa Psi – Eta Zeta Budget</u> | <u>Pg. 9</u> |
| Activies/Member Involvment | |
| <u>Tau Beta Sigma – Zeta Delta</u> | <u>Pg. 10</u> |
| <u>Kappa Kappa Psi – Eta Zeta</u> | <u>Pg. 11</u> |
| <u>TBS & KKY Member Report</u> | <u>Pg. 12</u> |
| Travel | |
| <u>Distance from each University</u> | <u>Pg. 13</u> |
| <u>Air Travel</u> | <u>Pg. 14</u> |
| <u>Hotels</u> | <u>Pg. 15</u> |
| <u>Parking</u> | <u>Pg. 16</u> |
| <u>Meetings & Workshops</u> | <u>Pg. 17</u> |
| <u>Joint & Separate Meetings</u> | <u>Pg. 18</u> |
| <u>Security</u> | <u>Pg. 19</u> |
| Banquet | |
| <u>Banquet Hall</u> | <u>Pg. 10</u> |
| <u>Menu</u> | <u>Pg. 21</u> |
| <u>Reading Band Conductors</u> | <u>Pg. 22</u> |
| <u>Lawrence, KS</u> | <u>Pg. 23</u> |
| <u>Letter to the Committee</u> | <u>Pg. 24</u> |

Be a Hero Through Music

Be a Hero Through Music is the theme that we at the University of Kansas felt showed what our chapters are about, while also tying together our past musical experiences and fun history about superheroes in Kansas.



Superman is a beloved superhero of people of all different walks of life. He is a great example of working to achieve all that is good and triumph over evil.

One big thing that has brought the chapters of Zeta Delta and Eta Zeta together is music. Music can be found in all of the superhero shows and movies. During our time in the Marching Band and Pep Bands, our University has played many shows involving superhero themes, and it is a common “stand tune” played at almost every sporting event.

Being a hero can mean many different things to each person. That is why we chose this theme, being a hero through music or through your brothers and sisters can help show how unique each one of us is, while also working towards something great together.



To Whom It May Concern:

March 22, 2018

I am writing to you in regards to our Tau Beta Sigma chapter, Zeta Delta's, 2019 host convention bid. Our chapter is very active here at KU and in our community. Their work and support of the Marching Jayhawks is outstanding as is their outreach in the community to both music aspects and other service possibilities in the area. They communicate and work very well with our Kappa Kappa Psi chapter and I feel they could do a wonderful job hosting this event with our brother organization.

Our Tau Beta Sigma and Kappa Kappa Psi chapters hosted a convention just a few years ago that was very successful. Our facilities can easily manage this event and we can offer brand new facilities and dining options near the School of Music that would also accommodate breakout sessions, meeting, events and meals.

I give them my full support in this endeavor. If there's anything I can do to assist you in this process, please do not hesitate to reach out.

Sincerely,

A handwritten signature in black ink that reads 'Sharon L. Toulouse'. The signature is written in a cursive style with a large initial 'S'.

Sharon L. Toulouse
Assistant Director of Bands
University of Kansas
stoulouse@ku.edu
785-864-4460

March 20, 2018

To the Members of the 2019 District Convention Selection Committee:


It is with great pleasure that I write to you in support of our bid to host the 2019 Kappa Kappa Psi and Tau Beta Sigma Midwest District Convention. The members of our chapters here at the University of Kansas have been working diligently to prepare the logistical details for their bid, and I hope that you find their efforts worthy of selection. We last hosted the district convention in 2013, and it was by all accounts a tremendous success. We would welcome the opportunity to share our facilities and the best of Lawrence with members of the Midwest District.

In reviewing the materials to be presented at the District Convention in Rolla, I am impressed by our chapters' efforts to introduce potential attendees not only to our facilities at the University of Kansas, but also to introduce them to the fine city of Lawrence. Not only does this require a great deal of correspondence and planning, but it also exemplifies the pride that our students have in the university in general as well as our community. I am certain that the members of the district would be pleased with the proposed venues for meetings, concerts, and rituals.

We have two fantastic chapters here at KU comprised of fantastic young men and women. Their service is never yielding, and the members never halt in their pursuit of service avenues for our bands. We would be honored to showcase their efforts and the resources of our university through the 2019 Midwest District Convention.

I wish you the best of luck in your selection process!

Yours in Music,



Matthew O. Smith, D.M.A.
Associate Director of Bands
University of Kansas

March 22, 2018

Kappa Kappa Psi
Tau Beta Sigma
District Convention Selection Committee

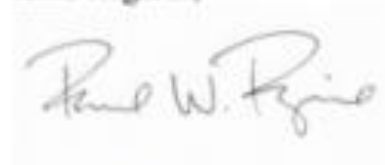
Committee members:

I am writing in support of the bid that Kappa Kappa Psi, Eta Zeta and Tau Beta Sigma, Zeta Delta have submitted to host the Midwest District convention on the University of Kansas campus in 2019.

I have found both groups to be supportive of the University of Kansas Bands and the School of Music as a whole. Their service in support of our student body, our athletic and concert bands and the Murphy Hall facilities is deeply appreciated. While both chapters are involved with the KU Bands in many ways, specific activities immediately come to mind. They provide recycling support for the Marching Jayhawks at football games, material supply of the student lounge in the Band division and lend their musical talents to our concert bands.

I believe their effort to host the Midwest District convention reflects their abilities as chapters. Would that effort be successful, I would expect the management of the Midwest District convention to be effective.

Kind Regards,



Dr. Paul W. Popiel
Director of Bands

Proposed Convention Budget

| Income | |
|--|-----------------|
| Early Registration Fees (\$35 per person) | \$10,500 |
| Late Registration Fees (\$45 per person) | \$2,250 |
| Fundraising Initiatives (T-Shirts) | \$3,600 |
| Totals | \$16,350 |

| Expenses | Breakdown | Total |
|-------------------------|---|------------------|
| Copies/Printing | | FREE |
| Meeting Rooms | | FREE |
| Banquet Hall | | \$1,000 |
| Catering | \$19.50 per guest \$5.00 for China | ~\$9,800 |
| Banquet Gift | Pint Glasses (\$1.48 for 228; \$1.57 for 144) | \$650.86 |
| Joint/Separate Sessions | | \$1,000 |
| Ritual Rooms | | FREE |
| Totals | | ~\$13,000 |



Tau Beta Sigma - Zeta Delta Budget 17' - 18'

| Income | | |
|--------------------------|-------------------------------|-----------------------|
| Dues | Returning Members: \$1,800.00 | New Members: \$660.00 |
| Fundraising | Basketball Stand: \$7,000.00 | Other: \$500.00 |
| Total: \$9,960.00 | | |

| Expenses | | | | | | | |
|--------------------------|-------------------------------|---------------------------------|---------------------------|-----------------------|---------------------------|-------------------|-----------------|
| Dues & Fees | Returning Members: \$1,800.00 | New Members: \$660.00 | Honorary Members: \$50.00 | Chapter Fees: \$75.00 | Kappa Payment: \$2,700.00 | - | - |
| Convention | District Fee: \$840.00 | Travel: \$1,300.00 | - | - | - | - | - |
| Donation | Scholarship: \$100.00 | - | - | - | - | - | - |
| Social | Band Camp: \$200.00 | - | - | - | - | - | - |
| Chapter | Ritual: \$100.00 | Ritual Books (1 time): \$100.00 | Membership: \$100.00 | Service: \$125.00 | Historian: \$100.00 | Apparel: \$600.00 | MWDA C: \$30.00 |
| Savings | \$500.00 | - | - | - | - | - | - |
| Total: \$9,380.00 | | | | | | | |



Kappa Kappa Psi - Eta Zeta Budget

| Income | | |
|--------------------------|-------------------------------|-----------------------|
| Dues | Returning Members: \$3,910.00 | New Members: \$920.00 |
| Fundraising | Basketball Stand: \$2,000.00 | Other: \$88.00 |
| Total: \$6,918.00 | | |

| | | | |
|--------------------------|-------------------------------|-----------------------|---------------------|
| Dues & Fees | Returning Members: \$3,400.00 | New Members: \$800.00 | Chapter Fees: \$630 |
| Convention | Hotel: \$242.34 | | - |
| Donation | Scholarship \$100.00 | - | - |
| Social | Recruitment \$30.00 | - | - |
| Chapter | Ritual: \$8.00 | | |
| Total: \$5,210.34 | | | |



Tau Beta Sigma – Zeta Delta in Action

Service in the Band:

Hydrate or Diedrate - Water jugs: During band camp and before all home games, Tau fills up gallon water jugs to keep the band healthy and hydrated.

New Recruits - Band Registration: Tau assists in registering band members for the new season. This includes uniform fitting, instrument check-out, handling forms, and welcoming new and old members.

Doing the Dirty work - Cleaning Practice Rooms: Tau serves the school of music by deep cleaning the practice rooms. We put paper over the windows for privacy, pick up trash, and wipe down doors and pianos.

Helping Potential Recruits - School of Music Auditions: In the spring, Tau assists with the school of music auditions. We welcome people, escort people to practice or audition rooms, work information tables, and monitor audition rooms.

Returning the Supersuits - Uniform Turn-in: At the end of the marching season, Tau helps with collecting and checking uniform parts so they can be cleaned and used for the next season

Service in the Community:

Training them Young- Girl Scouts: Tau teams up with local girl scout troops and helps them earn their musicianship badge. We teach them about music from different cultures and compose a song.

Connecting with the Community - McLouth: Tau connected with a high school pep band and played a men and women's game. We interacted and made music with the band members.

Using our superpowers for good - Neuvant: Tau went to an assisted living center to serve the residents there. We talked with them during lunch and played music for them on a variety of instruments.

Using our superpowers for goods - Caroling: During the fall, Tau went caroling with Thanksgiving songs to collect canned goods for people in need.

Thanking the real heroes - Veterans Letters: During Thanksgiving, Tau wrote letters to soldiers overseas who could not be with their families for the holiday season

Providing for those in need - Turtle Totes: In the fall, Tau handmade bags for kids in a local music program to carry their music.

Kappa Kappa Psi – Eta Zeta

Activities

Halloween Costume Contest: We made Halloween candy bags to hand out to each band member before practice. After practice we hosted a costume contest with the Zeta Delta TBS chapter and the 1st, 2nd, and 3rd place winners would get a special prize! This gave us an opportunity to meet and socialize with band members we may not have had the opportunity to meet before, especially from other sections. I believe this to be a good representation of our 5th purpose.

Game day Gatorades: This game day was going to be extraordinarily hot and humid. The Eta Zeta chapter combined with our TBS chapter, Zeta Delta, and purchased enough water bottles and granola bars for the entire band of 270 members. This was an opportunity for us to promote the 3rd and 4th purpose of Kappa Kappa Psi. With good conduct and loyalty, helped hydrate each member before a very long, hot day, to ensure each member was healthy and perform at their very best.

Band bag tags: All around campus, we see every member of a sports team, or a staff member of a team at KU with a special backpack with a really cool bag tag (similar to a luggage tag) on it with their name on it and organization. This year we decided to make KU Marching Jayhawks luggage tags that one can put on a backpack and wear with pride around campus. Although it didn't have each individuals name on it, it did advertise the Marching Band that we can wear and show around campus.

Cleaning of the practice rooms: The Dean of the School of Music got in contact with me and wanted to meet up to discuss how we can serve the School of Music for this year. We discussed cleaning the practice rooms in our School of Music to help make it look nicer for those using them.

Member Report

| | 2015 - 2016 | 2016 - 2017 | 2017 - 2018 |
|---------------------|--------------------|--------------------|--------------------|
| Fall Actives | TBS: 19, KKY: 40 | TBS: 12, KKY:45 | TBS: 15, KKY: 39 |
| Fall Initiates | TBS: 8, KKY: 17 | TBS: 6, KKY: 16 | TBS: 9, KKY: |
| Fall Conditionals | TBS: 0, KKY: 4 | TBS: 2, KKY: 9 | TBS: 1, KKY: 8 |
| Fall Graduates | TBS: 1, KKY: 0 | TBS: 0, KKY: 0 | TBS: 0, KYK:0 |
| Spring Actives | TBS: 19, KKY: 40 | TBS: 12, KKY:45 | TBS: 23, KKY: 39 |
| Spring Initiates | TBS: 1, KKY: 0 | TBS: 0, KKY: 0 | TBS: 0, KKY: 0 |
| Spring Conditionals | TBSL 0, KKY: 4 | TBS: 1, KKY: 9 | TBS: 2, KKY: 8 |
| Spring Graduates | TBS: 4, KKY: 3 | TBS: 5, KKY: 5 | TBS: 5, KKY: 5 |



Distances from Chapters in Midwest District

| University | Distance (mi) | Driving Estimate |
|---|---------------|------------------|
| University of Colorado | 585 | 8 hr 21 min |
| Colorado School of Mines | 578 | 8 hr 19 min |
| Emporia State University | 82.4 | 1 hr 16 min |
| Iowa State University | 266 | 4 hr |
| Kansas State University | 85.2 | 1 hr 21 min |
| Lincoln University | 197 | 3 hr 4 min |
| University of Minnesota | 477 | 7 hr 5 min |
| University of Missouri | 168 | 2 hr 57 min |
| Missouri State University | 196 | 3 hr 8 min |
| Missouri University of Science & Technology | 240 | 4 hr 6 in |
| Montana State University | 1,183 | 17 hr 52 min |
| University of Nebraska- Lincoln | 194 | 3 hr 14 min |
| University of Nebraska- Kearney | 336 | 5 hr 38 min |
| University of Nebraska- Omaha | 190 | 3 hr 14 min |
| North Dakota State University | 627 | 9 hr 17 min |
| University of Northern Colorado | 605 | 9 hr 17 min |
| University of Northern Iowa | 356 | 5 hr 29 min |
| Northwest Missouri State University | 120 | 1 hr 57 min |
| South Dakota State University | 442 | 6 hr 25 min |
| Wayne State College | 294 | 5 hr 3 min |
| University of Wyoming | 700 | 10 hr 32 min |

Air Travel

For our brothers and sisters who choose to use air travel, the closest airport is Kansas City International Airport (MCI) in Kansas City, MO. 64153. It is 40.4 miles (42 min.) from Lawrence, KS. There are multiple shuttles that offer door-to-door service for those who would arrive at MCI. Listed below are some services and additional resources for those flying in:



Is there a shuttle that goes to MCI Airport?

<https://kuinfo.ku.edu/there-shuttle-goes-kci-mci-airport>

Door-to-door shuttles; Individual rates: <http://kcibats.com/> ;
<http://sdmtransportationks.com/> ;
<https://www.supershuttle.com/?SID=YELLOW>

Hotels



Primary Hotel: Comfort
Inn & Suites
151 McDonald Dr.
Lawrence, KS 66044

Rate: \$95 a night

Amenities: Free Wi-Fi,
free hot breakfast, fitness
center, and an indoor heated pool.

Room policy: up to 7 people per room.

Secondary Hotel: SpringHill Suites by Marriott
1 Riverfront Plaza
Lawrence, KS 66044

Rate: depends on number of guests

Other: Ballroom holds 180 guests



Parking

Central District Garage: Will be free after 5pm on Friday and through the weekend.

Yellow Parking Lots: Will be open to use after 4pm on Friday and through the weekend.

DeBruce Center; Allen Fieldhouse Garage: Is the option if you will arrive before 4pm. The rate is \$1.75 for the first hour and \$1.50 for each additional hour after.

KU THE UNIVERSITY OF KANSAS Lawrence Campus

Yellow permits are sold for these groupings of lots:

- Stadium includes lots 83, 83, 83-83, 83, 83, and 84.
- Cap Fed Recreation Center/Hoglund includes lots 71, 90, 111, 125, and 127.
- West District includes all yellow lots in the West District.

STADIUM

- 10 Sunflower Road S. Watson K5
- 12 Lyle Lane K5
- 13 Conforth Chapel K4
- 14 E. Fraser Hall K4
- 15 E. Blake Hall K5
- 16 E. Kansas Union K4
- 18 W. Wallace Hall K4
- 28 W. Memorial Drive J4
- 39 E. Memorial Drive J4
- 126 Facilities Administration Bldg J5

WEST DISTRICT

- 16. Caruth-O'Leary Hall B3
- 17. Green Hall B3
- 18. Sumner Avenue B3
- 19. JOP Hall B2
- 20. Summerfield Hall B3
- 24 Price Computing Center J5
- 25. Military Science Bldg B5
- 26 W. Memorial Drive J4
- 27. Hall Center K3
- 28 E. Memorial Drive J4
- 29. Leased Hall J4
- 30. Murphy Hall K3
- 31. E. Capital Federal Hall B3
- 32. Rec Center B3
- 33. Leased Hall B4
- 34. W. Memorial Drive J4
- 35. McCullum Labs B3
- 36. Youngling Hall C7
- 37. Youngling Hall C7
- 38. Youngling Hall C7
- 39. Youngling Hall C7
- 40. Youngling Hall C7
- 41. Youngling Hall C7
- 42. Youngling Hall C7
- 43. Youngling Hall C7
- 44. Youngling Hall C7
- 45. Youngling Hall C7
- 46. Youngling Hall C7
- 47. Youngling Hall C7
- 48. Youngling Hall C7
- 49. Youngling Hall C7
- 50. Youngling Hall C7
- 51. Youngling Hall C7
- 52. Youngling Hall C7
- 53. Youngling Hall C7
- 54. Youngling Hall C7
- 55. Youngling Hall C7
- 56. Youngling Hall C7
- 57. Youngling Hall C7
- 58. Youngling Hall C7
- 59. Youngling Hall C7
- 60. Youngling Hall C7
- 61. Youngling Hall C7
- 62. Youngling Hall C7
- 63. Youngling Hall C7
- 64. Youngling Hall C7
- 65. Youngling Hall C7
- 66. Youngling Hall C7
- 67. Youngling Hall C7
- 68. Youngling Hall C7
- 69. Youngling Hall C7
- 70. Youngling Hall C7
- 71. Youngling Hall C7
- 72. Youngling Hall C7
- 73. Youngling Hall C7
- 74. Youngling Hall C7
- 75. Youngling Hall C7
- 76. Youngling Hall C7
- 77. Youngling Hall C7
- 78. Youngling Hall C7
- 79. Youngling Hall C7
- 80. Youngling Hall C7
- 81. Youngling Hall C7
- 82. Youngling Hall C7
- 83. Youngling Hall C7
- 84. Youngling Hall C7
- 85. Youngling Hall C7
- 86. Youngling Hall C7
- 87. Youngling Hall C7
- 88. Youngling Hall C7
- 89. Youngling Hall C7
- 90. Youngling Hall C7
- 91. Youngling Hall C7
- 92. Youngling Hall C7
- 93. Youngling Hall C7
- 94. Youngling Hall C7
- 95. Youngling Hall C7
- 96. Youngling Hall C7
- 97. Youngling Hall C7
- 98. Youngling Hall C7
- 99. Youngling Hall C7
- 100. Youngling Hall C7

UNIVERSITY HOUSING

- 101 Park & Ride D10
- 102 E. Temple Hall B3
- 103 Engel Hall B3
- 104 W. Elworth Hall B3
- 105 E. Elworth Hall B3
- 106 G. Lee Center B3
- 107 E. Elworth Hall B3
- 108 E. Elworth Hall B3
- 109 E. Elworth Hall B3
- 110 E. Elworth Hall B3
- 111 E. Elworth Hall B3
- 112 E. Elworth Hall B3
- 113 E. Elworth Hall B3
- 114 E. Elworth Hall B3
- 115 E. Elworth Hall B3
- 116 E. Elworth Hall B3
- 117 E. Elworth Hall B3
- 118 E. Elworth Hall B3
- 119 E. Elworth Hall B3
- 120 E. Elworth Hall B3
- 121 E. Elworth Hall B3
- 122 E. Elworth Hall B3
- 123 E. Elworth Hall B3
- 124 E. Elworth Hall B3
- 125 E. Elworth Hall B3
- 126 E. Elworth Hall B3
- 127 E. Elworth Hall B3
- 128 E. Elworth Hall B3
- 129 E. Elworth Hall B3
- 130 E. Elworth Hall B3
- 131 E. Elworth Hall B3
- 132 E. Elworth Hall B3
- 133 E. Elworth Hall B3
- 134 E. Elworth Hall B3
- 135 E. Elworth Hall B3
- 136 E. Elworth Hall B3
- 137 E. Elworth Hall B3
- 138 E. Elworth Hall B3
- 139 E. Elworth Hall B3
- 140 E. Elworth Hall B3
- 141 E. Elworth Hall B3
- 142 E. Elworth Hall B3
- 143 E. Elworth Hall B3
- 144 E. Elworth Hall B3
- 145 E. Elworth Hall B3
- 146 E. Elworth Hall B3
- 147 E. Elworth Hall B3
- 148 E. Elworth Hall B3
- 149 E. Elworth Hall B3
- 150 E. Elworth Hall B3
- 151 E. Elworth Hall B3
- 152 E. Elworth Hall B3
- 153 E. Elworth Hall B3
- 154 E. Elworth Hall B3
- 155 E. Elworth Hall B3
- 156 E. Elworth Hall B3
- 157 E. Elworth Hall B3
- 158 E. Elworth Hall B3
- 159 E. Elworth Hall B3
- 160 E. Elworth Hall B3
- 161 E. Elworth Hall B3
- 162 E. Elworth Hall B3
- 163 E. Elworth Hall B3
- 164 E. Elworth Hall B3
- 165 E. Elworth Hall B3
- 166 E. Elworth Hall B3
- 167 E. Elworth Hall B3
- 168 E. Elworth Hall B3
- 169 E. Elworth Hall B3
- 170 E. Elworth Hall B3
- 171 E. Elworth Hall B3
- 172 E. Elworth Hall B3
- 173 E. Elworth Hall B3
- 174 E. Elworth Hall B3
- 175 E. Elworth Hall B3
- 176 E. Elworth Hall B3
- 177 E. Elworth Hall B3
- 178 E. Elworth Hall B3
- 179 E. Elworth Hall B3
- 180 E. Elworth Hall B3
- 181 E. Elworth Hall B3
- 182 E. Elworth Hall B3
- 183 E. Elworth Hall B3
- 184 E. Elworth Hall B3
- 185 E. Elworth Hall B3
- 186 E. Elworth Hall B3
- 187 E. Elworth Hall B3
- 188 E. Elworth Hall B3
- 189 E. Elworth Hall B3
- 190 E. Elworth Hall B3
- 191 E. Elworth Hall B3
- 192 E. Elworth Hall B3
- 193 E. Elworth Hall B3
- 194 E. Elworth Hall B3
- 195 E. Elworth Hall B3
- 196 E. Elworth Hall B3
- 197 E. Elworth Hall B3
- 198 E. Elworth Hall B3
- 199 E. Elworth Hall B3
- 200 E. Elworth Hall B3

LEGEND

- Emergency phone
- Bus stop
- Traffic information booth
- Public parking
- Visitor parking and lot number
- No public access
- Free deposit box
- Metered parking
- Motorcycle or moped parking
- Carsharing
- Accessible parking
- Parking & Transit
- Permit parking and lot number
- K-10 Connector bus stop

WEST DISTRICT

- 1. Baker & Debraugh Baker Center B3C
- 2. Baker & Debraugh Baker Center B3C
- 3. Baker & Debraugh Baker Center B3C
- 4. Baker & Debraugh Baker Center B3C
- 5. Baker & Debraugh Baker Center B3C
- 6. Baker & Debraugh Baker Center B3C
- 7. Baker & Debraugh Baker Center B3C
- 8. Baker & Debraugh Baker Center B3C
- 9. Baker & Debraugh Baker Center B3C
- 10. Baker & Debraugh Baker Center B3C
- 11. Baker & Debraugh Baker Center B3C
- 12. Baker & Debraugh Baker Center B3C
- 13. Baker & Debraugh Baker Center B3C
- 14. Baker & Debraugh Baker Center B3C
- 15. Baker & Debraugh Baker Center B3C
- 16. Baker & Debraugh Baker Center B3C
- 17. Baker & Debraugh Baker Center B3C
- 18. Baker & Debraugh Baker Center B3C
- 19. Baker & Debraugh Baker Center B3C
- 20. Baker & Debraugh Baker Center B3C
- 21. Baker & Debraugh Baker Center B3C
- 22. Baker & Debraugh Baker Center B3C
- 23. Baker & Debraugh Baker Center B3C
- 24. Baker & Debraugh Baker Center B3C
- 25. Baker & Debraugh Baker Center B3C
- 26. Baker & Debraugh Baker Center B3C
- 27. Baker & Debraugh Baker Center B3C
- 28. Baker & Debraugh Baker Center B3C
- 29. Baker & Debraugh Baker Center B3C
- 30. Baker & Debraugh Baker Center B3C
- 31. Baker & Debraugh Baker Center B3C
- 32. Baker & Debraugh Baker Center B3C
- 33. Baker & Debraugh Baker Center B3C
- 34. Baker & Debraugh Baker Center B3C
- 35. Baker & Debraugh Baker Center B3C
- 36. Baker & Debraugh Baker Center B3C
- 37. Baker & Debraugh Baker Center B3C
- 38. Baker & Debraugh Baker Center B3C
- 39. Baker & Debraugh Baker Center B3C
- 40. Baker & Debraugh Baker Center B3C
- 41. Baker & Debraugh Baker Center B3C
- 42. Baker & Debraugh Baker Center B3C
- 43. Baker & Debraugh Baker Center B3C
- 44. Baker & Debraugh Baker Center B3C
- 45. Baker & Debraugh Baker Center B3C
- 46. Baker & Debraugh Baker Center B3C
- 47. Baker & Debraugh Baker Center B3C
- 48. Baker & Debraugh Baker Center B3C
- 49. Baker & Debraugh Baker Center B3C
- 50. Baker & Debraugh Baker Center B3C
- 51. Baker & Debraugh Baker Center B3C
- 52. Baker & Debraugh Baker Center B3C
- 53. Baker & Debraugh Baker Center B3C
- 54. Baker & Debraugh Baker Center B3C
- 55. Baker & Debraugh Baker Center B3C
- 56. Baker & Debraugh Baker Center B3C
- 57. Baker & Debraugh Baker Center B3C
- 58. Baker & Debraugh Baker Center B3C
- 59. Baker & Debraugh Baker Center B3C
- 60. Baker & Debraugh Baker Center B3C
- 61. Baker & Debraugh Baker Center B3C
- 62. Baker & Debraugh Baker Center B3C
- 63. Baker & Debraugh Baker Center B3C
- 64. Baker & Debraugh Baker Center B3C
- 65. Baker & Debraugh Baker Center B3C
- 66. Baker & Debraugh Baker Center B3C
- 67. Baker & Debraugh Baker Center B3C
- 68. Baker & Debraugh Baker Center B3C
- 69. Baker & Debraugh Baker Center B3C
- 70. Baker & Debraugh Baker Center B3C
- 71. Baker & Debraugh Baker Center B3C
- 72. Baker & Debraugh Baker Center B3C
- 73. Baker & Debraugh Baker Center B3C
- 74. Baker & Debraugh Baker Center B3C
- 75. Baker & Debraugh Baker Center B3C
- 76. Baker & Debraugh Baker Center B3C
- 77. Baker & Debraugh Baker Center B3C
- 78. Baker & Debraugh Baker Center B3C
- 79. Baker & Debraugh Baker Center B3C
- 80. Baker & Debraugh Baker Center B3C
- 81. Baker & Debraugh Baker Center B3C
- 82. Baker & Debraugh Baker Center B3C
- 83. Baker & Debraugh Baker Center B3C
- 84. Baker & Debraugh Baker Center B3C
- 85. Baker & Debraugh Baker Center B3C
- 86. Baker & Debraugh Baker Center B3C
- 87. Baker & Debraugh Baker Center B3C
- 88. Baker & Debraugh Baker Center B3C
- 89. Baker & Debraugh Baker Center B3C
- 90. Baker & Debraugh Baker Center B3C
- 91. Baker & Debraugh Baker Center B3C
- 92. Baker & Debraugh Baker Center B3C
- 93. Baker & Debraugh Baker Center B3C
- 94. Baker & Debraugh Baker Center B3C
- 95. Baker & Debraugh Baker Center B3C
- 96. Baker & Debraugh Baker Center B3C
- 97. Baker & Debraugh Baker Center B3C
- 98. Baker & Debraugh Baker Center B3C
- 99. Baker & Debraugh Baker Center B3C
- 100. Baker & Debraugh Baker Center B3C

OTHER

- 1. Hayes Hall B4
- 2. Strong & Bailey Hall J4
- 3. Dwyer Hall K4
- 4. Wilson Hall B3
- 5. S.W. Building Hall K4
- 6. E. Elworth Hall B3
- 7. E. Elworth Hall B3
- 8. E. Elworth Hall B3
- 9. E. Elworth Hall B3
- 10. E. Elworth Hall B3
- 11. E. Elworth Hall B3
- 12. E. Elworth Hall B3
- 13. E. Elworth Hall B3
- 14. E. Elworth Hall B3
- 15. E. Elworth Hall B3
- 16. E. Elworth Hall B3
- 17. E. Elworth Hall B3
- 18. E. Elworth Hall B3
- 19. E. Elworth Hall B3
- 20. E. Elworth Hall B3
- 21. E. Elworth Hall B3
- 22. E. Elworth Hall B3
- 23. E. Elworth Hall B3
- 24. E. Elworth Hall B3
- 25. E. Elworth Hall B3
- 26. E. Elworth Hall B3
- 27. E. Elworth Hall B3
- 28. E. Elworth Hall B3
- 29. E. Elworth Hall B3
- 30. E. Elworth Hall B3
- 31. E. Elworth Hall B3
- 32. E. Elworth Hall B3
- 33. E. Elworth Hall B3
- 34. E. Elworth Hall B3
- 35. E. Elworth Hall B3
- 36. E. Elworth Hall B3
- 37. E. Elworth Hall B3
- 38. E. Elworth Hall B3
- 39. E. Elworth Hall B3
- 40. E. Elworth Hall B3
- 41. E. Elworth Hall B3
- 42. E. Elworth Hall B3
- 43. E. Elworth Hall B3
- 44. E. Elworth Hall B3
- 45. E. Elworth Hall B3
- 46. E. Elworth Hall B3
- 47. E. Elworth Hall B3
- 48. E. Elworth Hall B3
- 49. E. Elworth Hall B3
- 50. E. Elworth Hall B3
- 51. E. Elworth Hall B3
- 52. E. Elworth Hall B3
- 53. E. Elworth Hall B3
- 54. E. Elworth Hall B3
- 55. E. Elworth Hall B3
- 56. E. Elworth Hall B3
- 57. E. Elworth Hall B3
- 58. E. Elworth Hall B3
- 59. E. Elworth Hall B3
- 60. E. Elworth Hall B3
- 61. E. Elworth Hall B3
- 62. E. Elworth Hall B3
- 63. E. Elworth Hall B3
- 64. E. Elworth Hall B3
- 65. E. Elworth Hall B3
- 66. E. Elworth Hall B3
- 67. E. Elworth Hall B3
- 68. E. Elworth Hall B3
- 69. E. Elworth Hall B3
- 70. E. Elworth Hall B3
- 71. E. Elworth Hall B3
- 72. E. Elworth Hall B3
- 73. E. Elworth Hall B3
- 74. E. Elworth Hall B3
- 75. E. Elworth Hall B3
- 76. E. Elworth Hall B3
- 77. E. Elworth Hall B3
- 78. E. Elworth Hall B3
- 79. E. Elworth Hall B3
- 80. E. Elworth Hall B3
- 81. E. Elworth Hall B3
- 82. E. Elworth Hall B3
- 83. E. Elworth Hall B3
- 84. E. Elworth Hall B3
- 85. E. Elworth Hall B3
- 86. E. Elworth Hall B3
- 87. E. Elworth Hall B3
- 88. E. Elworth Hall B3
- 89. E. Elworth Hall B3
- 90. E. Elworth Hall B3
- 91. E. Elworth Hall B3
- 92. E. Elworth Hall B3
- 93. E. Elworth Hall B3
- 94. E. Elworth Hall B3
- 95. E. Elworth Hall B3
- 96. E. Elworth Hall B3
- 97. E. Elworth Hall B3
- 98. E. Elworth Hall B3
- 99. E. Elworth Hall B3
- 100. E. Elworth Hall B3

Meetings and Workshops

Capitol Federal Hall

Opening in the fall of 2017, our new Business School is the perfect place to hold meetings, committees, and workshops for Convention. The building is 166,500 sq. ft., has 20 classrooms, a 350 seat auditorium, and 25 collaborative spaces. Each room in Capitol Federal Hall follow our campus' media standards and holds around 40 - 50 people.

Learned Hall

Our School of Engineering is another great space that can be used for workshops and meetings for Convention. Most of the rooms have a projector and computer available, all of the rooms have a writing surface, and have enough room ranging from 30-70 people in the rooms.

Each of these halls is located close walking distance from each other and is ADA accessible.

Media Standards

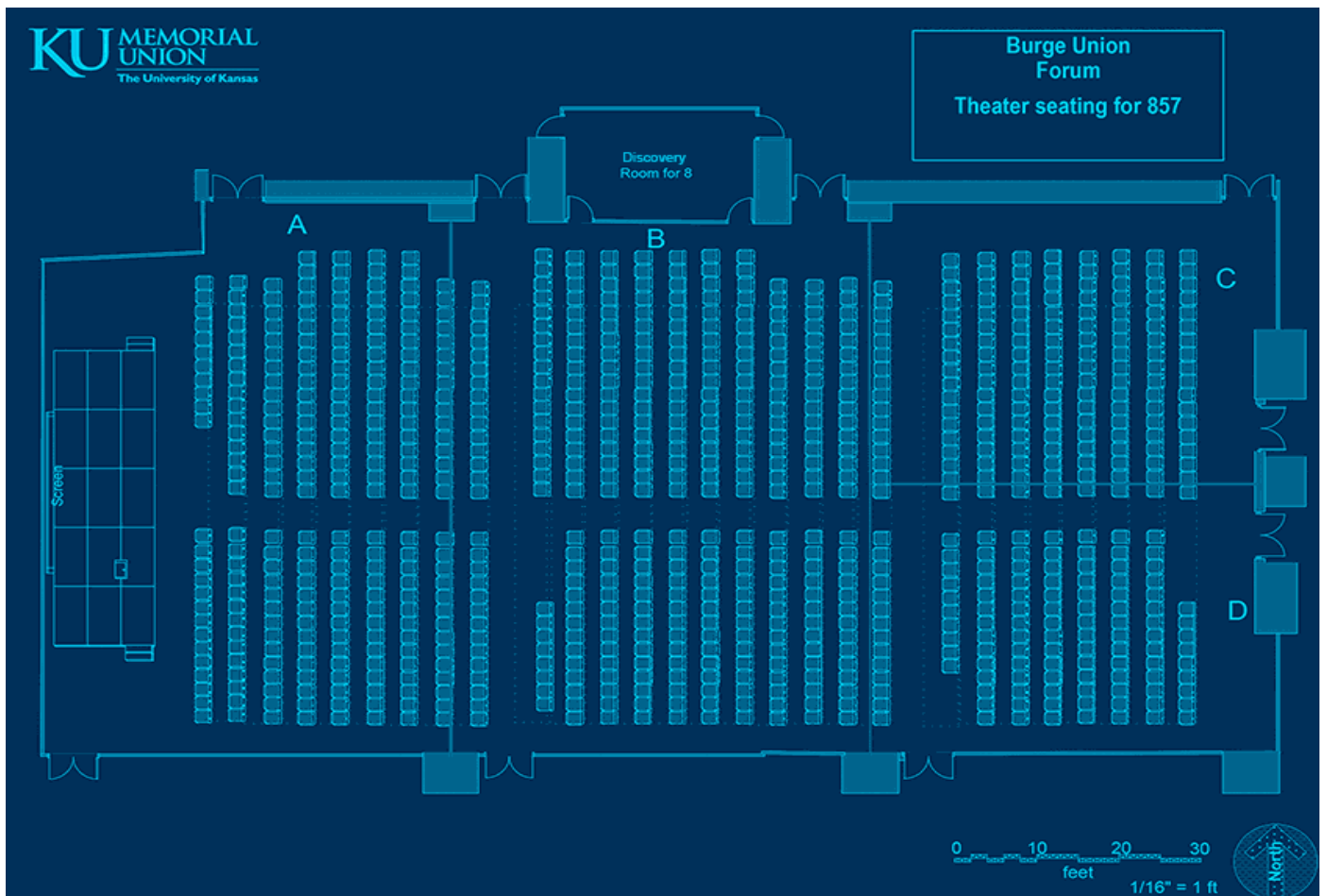
“The media classroom A/V standards cover the majority of classrooms at KU. Most general classrooms are lecture/discussion rooms that seat up to 99 people. Media classrooms include lecture capture capabilities and a video display with multiple content sources centrally controlled and located from a media lectern/podium with options for expansion.”

More information on our technology standards can be found at: <https://classrooms.ku.edu/room-types-standards>



Joint/Separates

Burge Union is our brand new facility that is opening April 6, 2018. The Burge Union Forum can be split up into single forum spaces, (A, B, C, or D) and then can be merged together (A & B, C & D, A & B & C & D) for a much larger space that can accommodate up to 857 people. This can be a great place to hold our joint and separate sessions for Convention.



*A blueprint of all of the forum spaces.

Security

Police Presence: 24/7



Emergency Blue Phones:
Located all throughout campus.
The phones are connected to the Emergency Communications Center; a KU Office of Public Safety Police Officer will be dispatched to that location immediately.

Concealed Carry: Must be 21 and a U.S. citizen to have a concealed gun on campus. Guns are not allowed in specific secured buildings.

Nearest Hospital: Lawrence Memorial Hospital; 325 Maine Street, Lawrence, KS. 66044; (785) 505-5000; www.lmh.org; Distance from the University of Kansas: 2.5 miles (7 min.); Distance from the Comfort Inn and Suites: 1.2 miles (5 min.)



Banquet

The Burge Union is also a great place to hold our banquet for Convention. The Burge Union Forum can transform into a dining hall, with rounds of 8 to a table seating around 640 people.

Catering will be done by our campus' KU Catering. KU catering has many great options for any event and can make it unique to each person. The plan that we have chosen to utilize would be the *"Do It Yourself" Buffets; Oread*. This option allows us to choose two salads, one Tier One entrée, one Tier Two entrée, two side dishes, and one dessert for \$19.50 a person. This option allows us to make sure that every person is getting something that they can eat while not going over the \$19.50 price. The service will be done as a Formal Service that includes china, glassware, linen and table skirting. Below we have provided the menu.



► Turn any DIY Buffet into brunch by adding assorted pastries, seasonal fresh fruit, choice of fruit juice, scrambled eggs, hash brown potato casserole and bacon and pork or turkey sausage links for \$10.00/person.

“Do It Yourself” Buffets

► All DIY Buffets are served with rolls, butter, coffee or punch, iced tea and water.

| | | |
|---------------------------------------|---|--------------|
| Blue Plate | Choose one salad, one Tier One entrée, two side dishes and one dessert | 16.25 |
| Oread | Choose two salads, one Tier One entrée, one Tier Two entrée, two side dishes, one dessert | 19.50 |
| Jayhawk (Minimum 50 guests) | Choose two salads, three entrées from either Tier One or Two, three side dishes and a dessert | 22.00 |

Salad Selections

► See page 22-23

Side Dish Selections

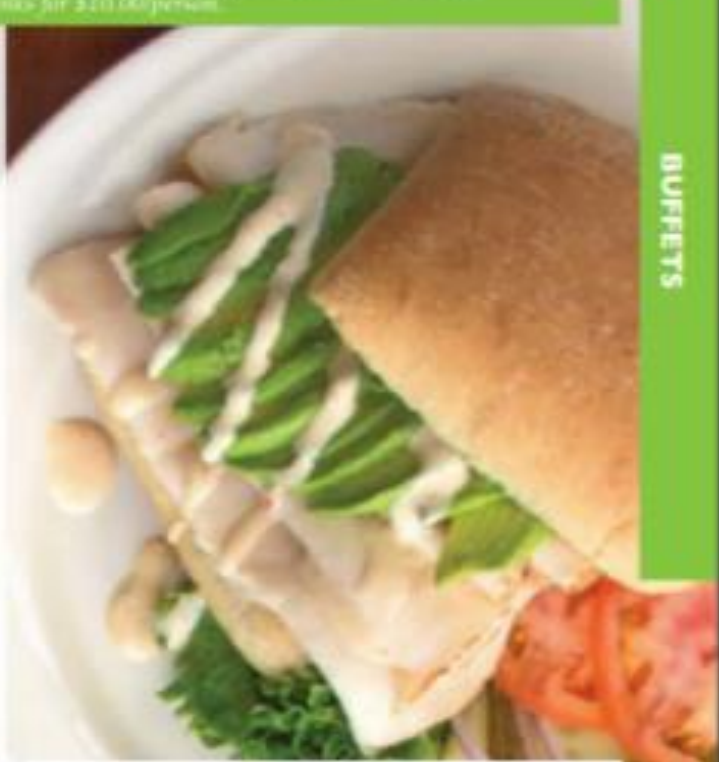
► See page 26

Tier One Entrée Selections

- BBQ-glazed boneless pork chops
- Meat loaf
- Marsala mushroom beef tips
- Dijon roasted pork loin with apple-brandy cream sauce
- Grilled chicken breast with herb butter sauce
- Chicken Dijon
- Sicilian chicken
- Chicken Scarpanello
- Grilled chicken pesto
- Chicken picatta
- Lemon turmeric chicken thighs
- Beef lasagna
- Spinach lasagna (vegetarian)
- Stuffed peppers (vegetarian)
- Seared roasted garlic and parmesan polenta with grilled tomato sauce (vegetarian)
- Mushroom shepherd's pie (vegan)
- Cheese tortellini aglio e olio (vegetarian)
- Cheese and herb stuffed zucchini boat (vegetarian)

Tier Two Entrée Selections

- Beef brisket (au jus or BBQ)
- Eye of round
- Shrimp primavera
- Baked cod romanesco
- Mediterranean chicken artichoke
- Rosemary orange glazed bone-in chicken breast
- Indian butter chicken
- Curry chicken with tomato achar
- Chicken artichoke
- Chicken Tichoupitoulas
- Chicken parmesan
- Chicken gratin
- Eggplant parmesan (vegetarian)
- Southwest corn crepes (vegetarian)
- Butternut squash and sun-dried tomato torttolo casserole (vegetarian)
- Wild mushrooms and champagne cream pot pie (vegetarian)
- Grilled cauliflower and spiced garbanzo beans with kale pesto (vegan)



Dessert Selections

- Brownies
- Gourmet cookies (two cookies per guest)
- Lemon cream cake garnished with strawberries
- Chocolate zebra cake
- Traditional cheesecake with strawberry sauce and chocolate shavings
- Sheet cake
- House-made fruit cobbler (Apple-pecan, blackberry, peach or cherry) Serve your cobbler à la mode for \$1.80 per person (on-site only)



Reading Bands

Dr. Mathew O. Smith is our University's Associate Director of Bands. He conducts the Symphonic Band, the Marching Jayhawks, and teaches at the School of Music. He is also the sponsor for Kappa Kappa Psi – Eta Zeta, an honorary member of the chapter, and works closely with both Kappa Kappa Psi and Tau Beta Sigma.

Dr. Paul W. Popiel is the Director of Bands at the University of Kansas, and is one of only seven people who have held this position in our 125 year history. He conducts the KU Wind Ensemble, directs the graduate wind conducting program, and guides all university band programs. He is an avid supporter of both chapters and all of the ensembles here at the University of Kansas



Lawrence, KS

Policies: Legal drinking age is 21 years old. Legal age to purchase and smoke tobacco is 18 years old.

Starting July 1, 2018 smoking including the use of electronic cigarettes, or any products that simulates or approximates tobacco use or smoking is prohibited on the University of Kansas' campus. Fines can range from \$100 to \$500. This is not applicable to personal vehicles on campus or Native American traditional usage.

Lawrence is filled with many unique opportunities for people to do when visiting. There are hundreds of different restaurants, coffee shops, social lounges, events, and so much more! All of these things can be found at Unmistakably Lawrence at <https://unmistakablylawrence.com/>



Letter to the Committee

Dear Brothers and Sisters,

In this packet you have seen a little piece of our chapters, and a little piece of each member that helped put it together. It has shown how creative, hard-working, and dedicated our brothers and sisters are to our chapters and to each other.

Over the past few months, we at the University of Kansas have been working together on this packet. It has been a great opportunity for our brothers and sisters to get to work together. This opportunity shed light on the strengths of each individual working on it, whether they were a new member, just initiated this year, or a graduating senior working hard on their last project with their brothers and sisters.

It has been a truly rewarding experience getting to work with not only members of both chapters, but also with our faculty around campus. The opportunity we were given to see how hard-working and creative our brothers and sisters are, is something we will never forget. We have not only learned about each other in this process, but more about our campus and community and all that can offer someone.

We at the University of Kansas would like to thank you for your consideration on our Convention Bid and for taking the time to look over what we have prepared for our District. It would be an extraordinary honor to be chosen to host a Midwest District Convention and we at the University of Kansas are very eager to have the opportunity to work more as brothers and sisters at the chapter level and at the District level.

Respectfully submitted,

Hannah DePriest: Tau Beta Sigma - Zeta Delta
Joshua Herrera: Kappa Kappa Psi - Eta Zeta
KU Convention Planning Committee Co-Chairs